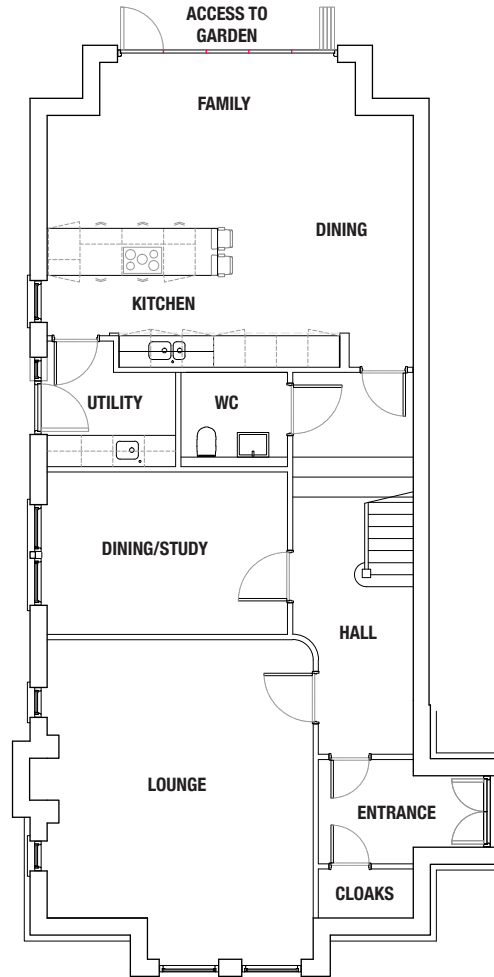




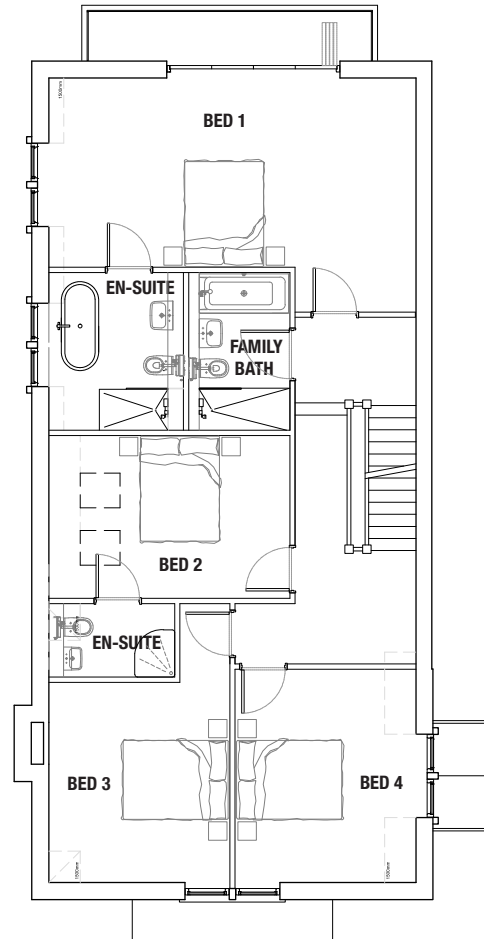
WOODLANDS

PLOT 1



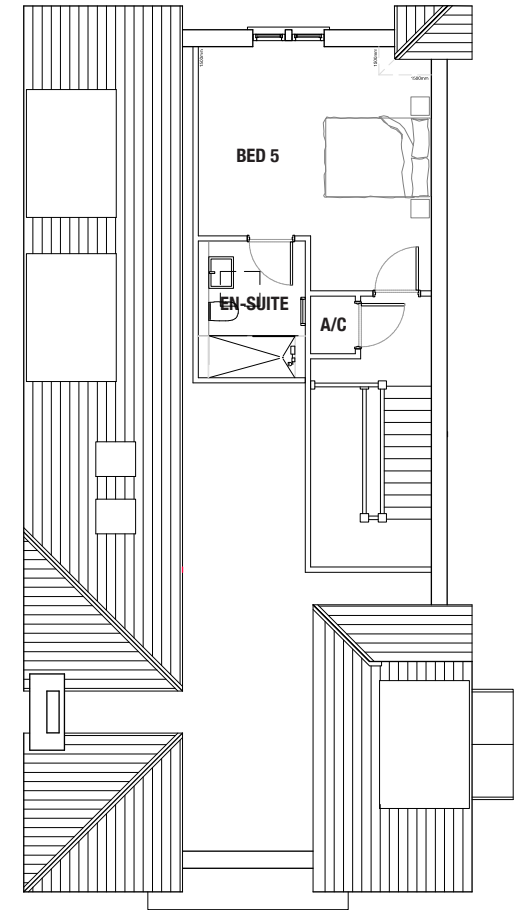
GROUND FLOOR

Kitchen/Family/Dining	6.99m x 5.82m 22'11" x 19'1"
Lounge	6.10m x 5.08m 20'0" x 16'8"
Dining/Study	4.59m x 3.10m 15'1" x 10'2"
Utility	2.50m x 2.45m 8'2" x 8'1"
WC	2.04m x 1.80m 6'8" x 5'11"



FIRST FLOOR

Bedroom 1	6.99m x 4.46m 22'11" x 14'7"
En-suite (Bed 1)	3.00m x 2.56m 9'10" x 8'5"
Bedroom 2	4.59m x 3.10m 15'1" x 10'2"
En-suite (Bed 2)	2.56m x 1.58m 8'5" x 5'2"
Bedroom 3	3.81m x 3.44m 12'6" x 11'4"
Bedroom 4	4.06m x 3.44m 13'4" x 11'4"
Family Bathroom	3.00m x 1.93m 9'10" x 6'4"



SECOND FLOOR

Bedroom 5	4.65m x 4.44m 15'3" x 14'7"
En-suite (Bed 5)	2.60m x 2.04m 8'6" x 6'8"

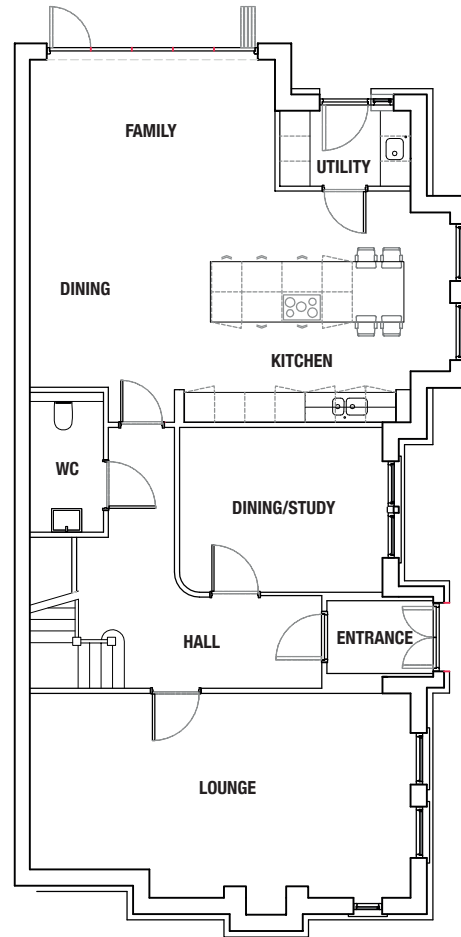
All Dimensions taken at widest point.

Plans show super king bed in Bed 1 and king size beds in all other bedrooms.



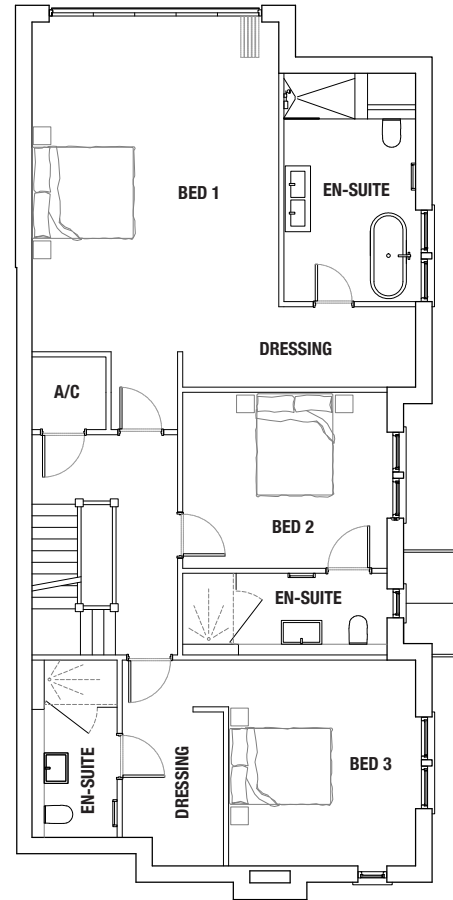
WOODLANDS

PLOT 2



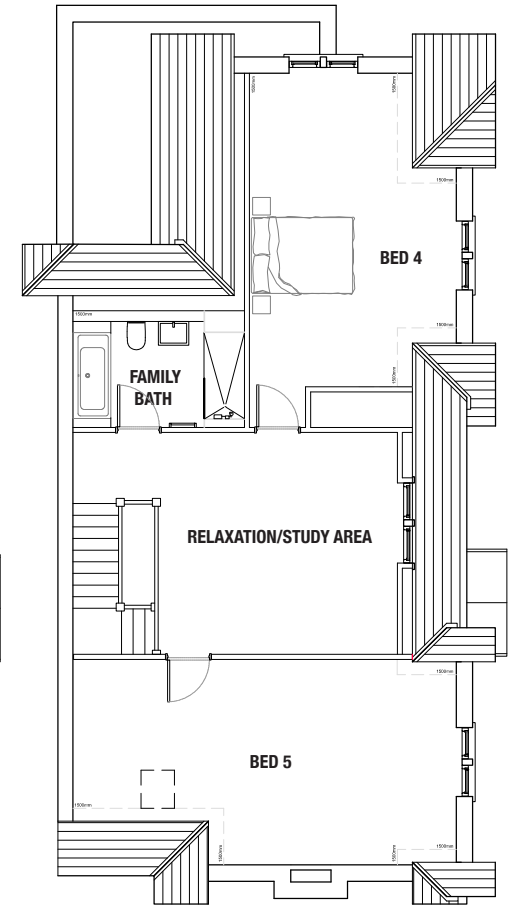
GROUND FLOOR

Kitchen/Family/Dining	8.36m x 7.21m 27'5" x 23'8"
Lounge	7.58m x 4.06m 24'10" x 13'4"
Dining/Study	4.04m x 3.28m 13'3" x 10'9"
Utility	2.60m x 1.50m 8'6" x 4'11"
WC	2.78m x 1.46m 9'1" x 4'10"



FIRST FLOOR

Bedroom 1	6.51m x 4.88m 21'4" x 15'12"
Dressing (Bed 1)	4.60m x 1.59m 15'1" x 5'3"
En-suite (Bed 1)	4.51m x 2.60m 14'9" x 8'6"
Bedroom 2	4.04m x 3.43m 13'3" x 11'3"
En-suite (Bed 2)	4.04m x 1.61m 13'3" x 5'4"
Bedroom 3	4.06m x 3.69m 13'4" x 12'1"
Dressing (Bed 3)	3.04m x 2.00m 9'12" x 6'7"
En-suite (Bed 3)	3.50m x 1.68m 11'6" x 5'6"



SECOND FLOOR

Bedroom 4	7.00m x 4.09m 22'12" x 13'5"
Bedroom 5	7.57m x 4.06m 24'10" x 13'4"
Relaxation/Study Area	6.41m x 4.39m 21'0" x 14'5"
Family Bathroom	3.39m x 2.31m 11'1" x 7'7"

All Dimensions taken at widest point.

Plans show super king bed in Bed 1 and king size beds in all other bedrooms.